

- 3 AIRWAY MANAGEMENT**
- 5 ANESTHESIA MACHINES**
- 9 BLOOD MANAGEMENT**
- 10 BREATHING CIRCUITS & MASKS**
- 11 CARTS**
- 11 INFECTION PREVENTION**
- 11 INFORMATION MANAGEMENT SYSTEMS**
- 11 MONITORING SYSTEMS & DEVICES**
- 13 PAIN MANAGEMENT**
- 13 PATIENT SAFETY**
- 14 REGIONAL ANESTHESIA**
- 14 SURGICAL BOOMS & LIGHTS**
- 14 ULTRASOUND**

AVAILABLE ONLINE 24/7



NEW PRODUCTS FOR YOUR PRACTICE

**BUYER'S GUIDE**

Summer/Fall 2025

22nd  
Annual



**ProVu® Video Laryngoscopes**

Equip your team for any airway with a full line of Miller, Mac & Hyper-angulated blades.

NEW



Miller 2



Mini &  
Standard  
Miller



Mini  
Mac &  
Hyper



Standard  
Mac



Standard  
Hyper



**ProVu® Rigid Stylet**

Pre-formed to accompany ProVu Hyper-angulated video laryngoscopes and accommodate a broad range of patients and procedures.



Improved  
Handling



Ideal  
Depth



Optimal  
Stiffness



Scan for more info



# SET YOUR EXPECTATIONS HIGHER

Discover the Difference:  
Masimo SET®  
Pulse Oximetry

**Masimo SET®** overcomes the limitations of conventional pulse oximetry—and outperforms the rest.

## Over 100 studies

have shown that Masimo SET® outperforms other pulse oximetry technologies.<sup>1</sup>

## 200+ million patients

are monitored by Masimo SET® pulse oximetry each year.<sup>2</sup>

## All top 10 U.S. hospitals

as ranked in the 2024 Newsweek World's Best Hospitals listing use Masimo SET® as their primary pulse oximetry technology.<sup>3</sup>

## Unrivaled SpO2 accuracy

with RD SET® pulse oximetry sensors, achieved through continued innovation.<sup>4</sup>



Learn more about SET® and make a difference in patient outcomes today.

<sup>1</sup>Comparative studies include abstracts presented at scientific meetings and peer-reviewed journals. Clinical studies on pulse oximetry and the benefits of Masimo SET® can be found at <https://professional.masimo.com/clinical-evidence>. <sup>2</sup>Estimate: Masimo data on file. <sup>3</sup>Newsweek: World's Best Hospitals 2024. <https://www.newsweek.com/rankings/worlds-best-hospitals-2024/united-states>. <sup>4</sup>Masimo RD SET Sensor Instructions for Use: LAB-10497A posted on <https://techdocs.masimo.com/>.

**AIRWAY MANAGEMENT**

1

**ADROIT SURGICAL**

**BÉBÉ VIE SCOPE® BOUGIE INTRODUCER**



10001 Broadway Extension, Suite A, Oklahoma City, OK 73114  
425-577-2713  
customerservice@adroitsurgical.com  
adroitsurgical.com

The bébé Vie Scope® is a one-size pediatric laryngoscope. It is used similarly to the Vie Scope, but an age-appropriate endotracheal tube is passed directly through the vocal cords using a straight line of sight. The unique blade design facilitates blade insertion into the vallecula or elevation of the epiglottis.



**AIRWAY MANAGEMENT**

5

**BELL MEDICAL**

**PI BARIATRIC PATIENT POSITIONING PILLOW**



1728 Macklind Avenue, St. Louis, MO 63110  
314-772-5600  
customerservice@bellmedical.com  
bellmedical.com

Pi Bariatric Positioning Pillow & Ramp naturally positions patient's airway making laryngeal inlet easily visible aiding in first-pass intubations. Pi Pillow has a unique adjustable head rest allowing for ideal intubation positioning.

Pi Pillows are ideal for obese and obstructive sleep apnea patients. Pi reduces laryngoscope force making intubation safer limiting the damage of airway tissue. Available in disposable or reusable pillows.



**AIRWAY MANAGEMENT**

2

**ADROIT SURGICAL**

**VIE SCOPE® BOUGIE INTRODUCER**



10001 Broadway Extension, Suite A, Oklahoma City, OK 73114  
425-577-2713  
customerservice@adroitsurgical.com  
adroitsurgical.com

The Vie Scope® makes intubation in the difficult airway and trauma patient simple. The most effective and safest device to intubate your COVID-19 patients. Vie Scope provides a straight line of sight to the vocal cords for rapid insertion of the bougie, including in awake patients. Patented illumination uses LEDs at the proximal end of the clear tube to minimize loss of light from blood/secretions, giving the user the best view possible in all cases. One size fits all adults. Contact us for a demo scope.



**AIRWAY MANAGEMENT**

6

**BELL MEDICAL**

**QVIEW PRONE CUSHIONS**



1728 Macklind Avenue, St. Louis, MO 63110  
314-772-5600  
customerservice@bellmedical.com  
bellmedical.com

QView Prone Pillow is a low-cost cushion compatible with the ProneView Helmet System. QView has a hypoallergenic layer of 3M biocompatible material for patients with sensitive skin. Clear view access to patient's mouth, nose, eyes and endotracheal tube (ETT) through slotted design. ETT support and viewing mirror. Comfortable and supportive of patient's head and neck in contoured pillow cradle. Single patient use, latex-free.



**AIRWAY MANAGEMENT**

3

**BELL MEDICAL**

**BITEME, AIR CUSHIONED PERIOPERATIVE BITE BLOCK**



1728 Macklind Avenue, St. Louis, MO 63110  
314-772-5600  
customerservice@bellmedical.com  
bellmedical.com

Stop rolling gauze! BiteMe is an air-filled soft plastic bite block designed to prevent dental trauma and protect a patient's endotracheal tube or laryngeal mask during general anesthesia. Tapered distal end allows easy placement. Concave side allows easy taping of airway devices. Depth markings, blue color and smooth finish make it easy to insert and remove. Individually wrapped clean. Contact us for free samples.



**AIRWAY MANAGEMENT**

7

**FLEXICARE, INC.**

**BRITEPRO™ OMNI**

See ad on p. 1



15281 Barranca Parkway, Unit D, Irvine, CA 92618  
949-450-9999  
inquiries@flexicare.com  
flexicare.com

The BritePro™ Omni is a single-use, one-piece laryngoscope blade and handle solution ready for use straight from the sterile pack. The superbright, distally located LED light delivers excellent visualization. The ultra-low-profile blade design reduces risk for dental trauma. The metal, color-coded blades and labeled secure-grip handles allow for easy size identification. Simply open, use and then dispose.

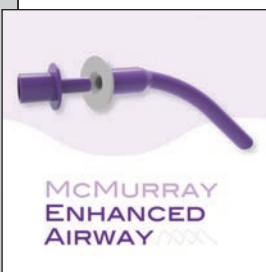


**AIRWAY MANAGEMENT**

4

**BELL MEDICAL**

**McMURRAY ENHANCED ORAL AIRWAY**



1728 Macklind Avenue, St. Louis, MO 63110  
314-772-5600  
customerservice@bellmedical.com  
bellmedical.com

The McMurray Enhanced Airway (MEA) is a distal pharyngeal airway and new category of basic airway tools. Placed orally between the molars, the MEA relieves upper airway obstruction, facilitates apneic oxygenation and aids intraoral ventilation to overcome masking challenges. It's fast and easy to use, displacing redundant pharyngeal tissue to improve ventilation and oxygenation under anesthesia or in emergencies.



**AIRWAY MANAGEMENT**

8

**FLEXICARE, INC.**

**BRITEPRO™ SOLO**

See ad on p. 1



15281 Barranca Parkway, Unit D, Irvine, CA 92618  
949-450-9999  
inquiries@flexicare.com  
flexicare.com

BritePro™ Solo—the completely sterile, disposable laryngoscope system. Featuring a focused LED light with shielded fiberoptic bundle, low-profile, fully metal blade and connection, and a lightweight, secure-grip handle with a five-year shelf life, BritePro Solo is the industry-leading disposable laryngoscope solution. Specialty blade and handle sizes are available for every clinical need, supplied together as a kit or individually.





# Enhance Your Practice with the New Slimline C-MAC® S Blades

**Strong**, reliable construction withstands 4–6× typical intubation forces <sup>1</sup>

Unique imager design promotes a **sustainable** platform, minimizing electronic waste <sup>2</sup>

**Slim** profile supports clinical satisfaction by enhancing visibility and handling

Discover the benefits of the Slimline C-MAC S single-use video laryngoscope today! Scan to learn more.



1. KARL STORZ. KS06371 / SSU Blades Initial (T0 & T0\*) Mechanical Safety Verification. 2024. Document No.C2.1.3.0001.F005d-RSTR-KS06371 SSU Blades Mechanical SafetyT0 & T0\*. Data on file.

2. Hess J, Semenova A. Emission Explorer: Tracking Greenhouse Gas Emissions from Chip Production (2015-2023). Interface. Mar. 17, 2025.

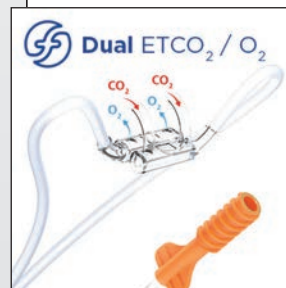
## AIRWAY MANAGEMENT

9

FLEXICARE, INC.

### DUAL™ CANNULAS & MASKS

See ad on p. 1



15281 Barranca Parkway, Unit D, Irvine, CA 92618  
949-450-9999  
inquiries@flexicare.com  
flexicare.com

Dual™ capnography solutions provide accurate end-tidal carbon dioxide sampling and oxygen delivery across a wide range of clinical needs—everything you need from the OR to recovery. Soft-touch interfaces allow for superior patient compliance and comfort, while kink-resistant tubing ensures consistent, accurate delivery of gases and waveforms. With a comprehensive offering of configurations and universal compatibility, Dual capnography solutions are designed to fit any monitoring system.



## AIRWAY MANAGEMENT

10

FLEXICARE, INC.

### PROVU® RIGID STYLETS

See ad on p. 1



15281 Barranca Parkway, Unit D, Irvine, CA 92618  
949-450-9999  
inquiries@flexicare.com  
flexicare.com

ProVu® Rigid Stylets were specially designed for use with ProVu Video Laryngoscope hyperangulated blades and to overcome the challenges of traditional airway management technology. With improved handling, ideal depth, optimal stiffness and easy removal, ProVu Rigid Stylets were engineered to assist with the navigation of even the most difficult of airways.



## AIRWAY MANAGEMENT

11

FLEXICARE, INC.

### PROVU® VIDEO LARYNGOSCOPE

See ad on p. 1



15281 Barranca Parkway, Unit D, Irvine, CA 92618  
949-450-9999  
inquiries@flexicare.com  
flexicare.com

Available with a range of hyperangulated, Mac, and Miller-style low-profile blades, ProVu® Video Laryngoscope (VL) is the perfect solution for routine and difficult intubations. With an ultra-high-quality image, adaptive lighting and true color technology, the 3.5- and 8-inch displays provide a superior view of the airway. ProVu VL was created for plug-and-play use: intuitive technology, rechargeable batteries and ready to use within seconds. The wipe-down-capable display, sterile, single-use

handle and 100% metal blade are designed for ease of use, reduced risk for cross-contamination and patient safety.



## AIRWAY MANAGEMENT

12

FLEXICARE, INC.

### VENTIBRONC ANCHOR DOUBLE-LUMEN TUBE

See ad on p. 1



15281 Barranca Parkway, Unit D, Irvine, CA 92618  
949-450-9999  
inquiries@flexicare.com  
flexicare.com

The VentiBronc Anchor is a new innovation in double-lumen endobronchial tube technology. With a patented carinal cuff, the Anchor was designed for easier placement and improved first-pass intubation success. By providing a physical stop at the carina, the Anchor both optimizes initial placement and prevents depth malpositioning. The soft, all-silicone tube is intended to reduce the risk for trauma, helps to secure placement and reduces the incidence of intraoperative repositioning

required. The novel design of the open-close valves allows for easy isolation of the targeted lung, with no clamps required.





**AIRWAY MANAGEMENT**

13

**INTERSURGICAL INC.**

**BREATHING FILTERS, HMEs AND HMEFs**



2055 Executive Drive, Indianapolis, IN 46241  
800-828-9633  
support@intersurgicalinc.com  
intersurgical.com

Intersurgical's full range of breathing filters offers >99.999% efficiency, providing a high level of protection to patients and respiratory equipment. Electrostatic and pleated filters maintain safe bacterial and viral performance even with moisture present, ensuring safe and effective filtration in all clinical conditions.



**AIRWAY MANAGEMENT**

17

**MEDTRONIC**

**MICROSTREAM™ ADVANCE FILTER LINES**



6135 Gunbarrel Avenue, Boulder, CO 80301  
800-635-5267  
medtronic.com/microstream

The right sampling line is crucial for reliable end-tidal CO<sub>2</sub>, respiratory rate and quality waveforms in capnography. Microstream™ Advance filter lines with Uni-junction™ technology sample from both nares and the mouth, ensuring accurate readings even at low tidal volumes. Suitable for intubated and non-intubated patients, from neonates to adults, these are the only cannulas validated for use with Microstream-enabled monitors.



**AIRWAY MANAGEMENT**

14

**INTERSURGICAL INC.**

**I-GEL®**



2055 Executive Drive, Indianapolis, IN 46241  
800-828-9633  
support@intersurgicalinc.com  
intersurgical.com

Intersurgical's truly unique single-use supraglottic airway with a non-inflatable cuff, designed to work in harmony with the anatomy. Made from a latex- and PVC-free, soft gel-like material, it provides a safe, rapid and reliable airway management solution with accurate and natural positioning. Available in four pediatric as well as three adult sizes.



**AIRWAY MANAGEMENT**

18

**PULMODYNE, AN INTERSURGICAL COMPANY**

**CONTROL-CRIC®**



2055 Executive Drive, Indianapolis, IN 46241  
317-900-4093  
info@pulmodyne.com  
pulmodyne.com

The Control-Cric® is packaged in three clear steps, guiding the provider through an otherwise chaotic procedure. Step 1 is the Cric-Knife™, a 10-mm dual-sided blade with an integrated sliding tracheal hook. Step 2 is the Cric-Key™, a 5.5-mm cuffed tube with an integrated introducer. Step 3 is the neck strap, a flexible silicone strap to slide easily over the tube to maintain position during ventilation.



**AIRWAY MANAGEMENT**

15

**INTERSURGICAL INC.**

**I-VIEW™ VIDEO LARYNGOSCOPE**



2055 Executive Drive, Indianapolis, IN 46241  
800-828-9633  
support@intersurgicalinc.com  
intersurgical.com

Intersurgical's single-use, fully disposable video laryngoscope providing the option of video laryngoscopy wherever you might need to intubate. Incorporating a Macintosh blade for familiar technique, i-view is ready to use seconds after removing from the packaging with an integral LCD screen for an optimal view.



**AIRWAY MANAGEMENT**

19

**STRYKER SURGICAL TECHNOLOGIES**

**PROCEDURAL OXYGEN MASK**



1941 Stryker Way, Portage, MI 49002  
safeor.com/products/procedural-oxygen-mask

Safety. Simplicity. Innovation. All in the same breath. Stryker's Procedural Oxygen Mask (POM) is designed to deliver a high concentration of oxygen and simultaneously monitor expired gases. Plus, it's available in three sizes: small (pediatric), medium and large (adult).

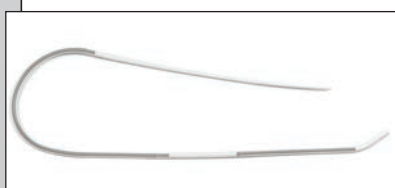


**AIRWAY MANAGEMENT**

16

**INTERSURGICAL INC.**

**UNIVERSAL STYLET BOUGIE (USB™)**



2055 Executive Drive, Indianapolis, IN 46241  
800-828-9633  
support@intersurgicalinc.com  
intersurgical.com

Intersurgical's unique design means the device can be used as a stylet or as a bougie. The USB can easily be manipulated to a variety of angles when used as a stylet, yet has the flexibility when used as a bougie to provide a significantly enhanced level of tracheal ring feedback.

Easier insertion and removal, easier storage and improved tracheal ring detection.



**ANESTHESIA MACHINES**

20

**DRÄGER**

**ATLAN® A350**



3135 Quarry Road, Telford, PA 18969  
800-437-2437  
info.usa@draeger.com  
draeger.com

Imagine the flexibility to have one anesthesia device platform with a high level of safety and performance in every OR. The comprehensive, yet scalable set of clinical features and proven ventilation quality make the Atlan® A350 an ideal anesthesia workstation for even the most challenging patients and surgical procedures. The platform design gives full flexibility for spatial conditions.

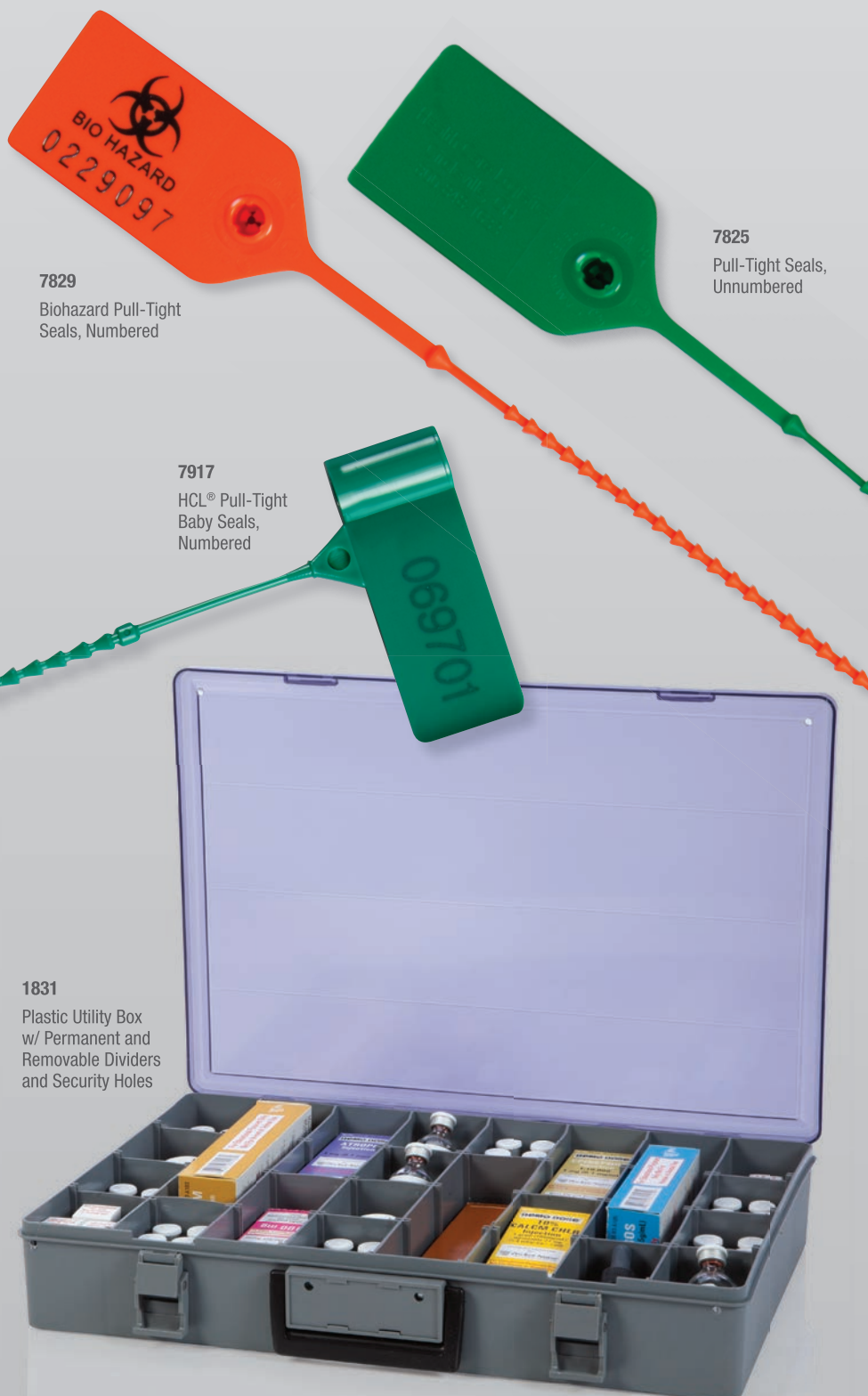


See ad on p. 16



# We Have the Supplies You Need!

Security Seals • Utility Boxes • Sterile Labels • Anesthesia Carts • & More!



1831

Plastic Utility Box  
w/ Permanent and  
Removable Dividers  
and Security Holes

7917

HCL® Pull-Tight  
Baby Seals,  
Numbered

7825

Pull-Tight Seals,  
Unnumbered

7829

Biohazard Pull-Tight  
Seals, Numbered

#### ANESTHESIA MACHINES

21

DRÄGER

ATLAN<sup>®</sup> A350 XL



3135 Quarry Road, Telford, PA 18969  
800-437-2437  
info.usa@draeger.com  
draeger.com

Imagine the flexibility to have one anesthesia device platform with a high level of safety and performance in every OR. The comprehensive, yet scalable set of clinical features and proven ventilation quality make the Atlan<sup>®</sup> A350 XL an ideal anesthesia workstation for even the most challenging patients and surgical procedures. The platform design gives full flexibility to meet your complete workstation needs.

**Dräger**

See ad on p. 16

#### ANESTHESIA MACHINES

22

DRÄGER

FABIUS<sup>®</sup> MRI



3135 Quarry Road, Telford, PA 18969  
800-437-2437  
info.usa@draeger.com  
draeger.com

The Fabius<sup>®</sup> MRI features our precision E-Vent<sup>®</sup> piston ventilator technology, renowned for both performance and safety. It has been tested for use with MRI systems of 1.5 and 3 T and can be safely operated at field strengths of 40 mT (400 G). From within the MRI suite, it's capable of exporting the clinical data you need for complete and accurate anesthesia records. Its user interface, common to Dräger workstations, enables seamless transition from the OR.

**Dräger**

See ad on p. 16

#### ANESTHESIA MACHINES

23

DRÄGER

PERSEUS<sup>®</sup> A500



3135 Quarry Road, Telford, PA 18969  
800-437-2437  
info.usa@draeger.com  
draeger.com

A highly configurable anesthesia workstation, the Perseus<sup>®</sup> A500 can be easily tailored to meet your needs. Its generous, well-lit workspace can be used to keep supplies organized and within reach. Its compact, heated breathing system is designed to reduce condensation buildup and facilitate fast gas-exchange rates. To support continuity of care between the ICU and OR, the Perseus A500 offers Airway Pressure Release Ventilation.

**Dräger**

See ad on p. 16

#### ANESTHESIA MACHINES

24

FLEXICARE, INC.

LITHOLYME & CARBOLIME



15281 Barranca Parkway, Unit D, Irvine, CA 92618  
800-444-3940  
customerservice@alliedmedicalllc.com  
flexicare.com

Litholyme: Next-generation alkali hydroxide-free formulation ideal for low-flow anesthesia protocols. Superior absorption capacity, permanent color change, low dust content and a less caustic formulation make it a premium, safe and reliable solution. Carbolime: Improved traditional formulation, efficient carbon dioxide absorption and low dust content offering a dependable and economical solution. Available in

prefilled or refillable options compatible with various anesthetic machines.

**flexicare**

See ad on p. 1



**ANESTHESIA MACHINES**

25

**GE HEALTHCARE**

**AISYS CS<sup>2</sup> WITH END-TIDAL CONTROL**



3030 Ohmeda Drive, Madison, WI 53718  
866-281-7545  
sara.fagin@gehealthcare.com  
<https://www.gehealthcare.com/products/anesthesia-delivery>

Aisys CS<sup>2</sup> with Et Control\* software automates oxygen and agent delivery, so you can focus on the patient. Et Control software can help you enhance patient safety in the OR, while helping you to reduce greenhouse gas emissions and costs. The precise, digital technology can be exported to cloud-based analytics apps that can automatically capture and analyze high-fidelity case data.

\*EtC is indicated for patients 18 years of age and older in the U.S.



**ANESTHESIA MACHINES**

29

**GE HEALTHCARE**

**CARESTATION™ INSIGHTS LIVE**



3030 Ohmeda Drive, Madison, WI 53718  
866-281-7545  
sara.fagin@gehealthcare.com  
[gehealthcare.com/products/anesthesia-delivery](https://www.gehealthcare.com/products/anesthesia-delivery)

Carestation Insights LIVE is a mobile application that provides visibility to relevant data from multiple operating rooms to help clinicians review patient status and assess how therapy is being delivered, all while on the move from outside the room. Carestation Insights LIVE mobile application receives and displays data from GE Healthcare anesthesia and patient monitoring devices.



**ANESTHESIA MACHINES**

26

**GE HEALTHCARE**

**CARESTATION™ 650**



3030 Ohmeda Drive, Madison, WI 53718  
866-281-7545  
sara.fagin@gehealthcare.com  
[gehealthcare.com/products/anesthesia-delivery](https://www.gehealthcare.com/products/anesthesia-delivery)

Sleek. Simple. Scalable. GE Healthcare's Carestation™ 650 is a compact, versatile and easy-to-use anesthesia system designed to help clinicians deliver reliable anesthesia care to solve today's toughest challenges. Featuring an elegant modern design, its slim, compact frame is well suited to constrained environments like ambulatory surgery centers.



**ANESTHESIA MACHINES**

30

**INTERSURGICAL INC.**

**ABCAN™ CO<sub>2</sub> ABSORBENT**



2055 Executive Drive, Indianapolis, IN 46241  
800-828-9633  
support@intersurgicalinc.com  
[intersurgical.com](https://www.intersurgical.com)

Intersurgical's easy-to-use disposable absorber. Compatible with Getinge® anesthetic machines, Flow-i, Flow-c and Flow-e. Containing Spherasorb unique medical grade CO<sub>2</sub> absorbent combining resistance to drying, safety with volatile anesthetics, low dust, excellent CO<sub>2</sub> capacity and less waste. Also available with LoFloSorb alkali hydroxide-free absorbent.



**ANESTHESIA MACHINES**

27

**GE HEALTHCARE**

**CARESTATION™ 750**



3030 Ohmeda Drive, Madison, WI 53718  
866-281-7545  
sara.fagin@gehealthcare.com  
[gehealthcare.com/products/anesthesia-delivery](https://www.gehealthcare.com/products/anesthesia-delivery)

The perioperative environment has become more complex with diverse patient cases that require customized therapy to facilitate better outcomes. Deliver personalized anesthesia therapy in comfort with the Carestation™ 750 Anesthesia Delivery System, a modern and easy-to-navigate anesthesia workstation that's built to give you the control and accuracy you need for high-quality, individualized care.



**ANESTHESIA MACHINES**

31

**INTERSURGICAL INC.**

**IS CAN™ CO<sub>2</sub> ABSORBENT**



2055 Executive Drive, Indianapolis, IN 46241  
800-828-9633  
support@intersurgicalinc.com  
[intersurgical.com](https://www.intersurgical.com)

Intersurgical's prefilled disposable CO<sub>2</sub> absorber offers ease of exchange with minimal handling. Compatible with GE® Aisys®, Avance® Aespire® anesthetic machines. Containing Spherasorb unique medical-grade CO<sub>2</sub> absorbent combining resistance to drying, safety with volatile anesthetics, low dust, excellent CO<sub>2</sub> capacity and less waste. Also available with LoFloSorb alkali hydroxide-free absorbent.



**ANESTHESIA MACHINES**

28

**GE HEALTHCARE**

**CARESTATION™ INSIGHTS ANALYTICS APPLICATIONS**



3030 Ohmeda Drive, Madison, WI 53718  
866-281-7545  
sara.fagin@gehealthcare.com  
[gehealthcare.com/products/anesthesia-delivery](https://www.gehealthcare.com/products/anesthesia-delivery)

Together with compatible GE Healthcare anesthesia delivery systems and patient monitors, Carestation Insights applications form an intelligent ecosystem that automatically captures and analyzes high-fidelity case data. Our apps use advanced algorithms to interpret these data and uncover actionable insights that are displayed on your personal devices. Use these insights to help improve patient care and support your clinical and

financial goals.



**ANESTHESIA MACHINES**

32

**INTERSURGICAL INC.**

**SMARTCAN™ CO<sub>2</sub> ABSORBENT**



2055 Executive Drive, Indianapolis, IN 46241  
800-828-9633  
support@intersurgicalinc.com  
[intersurgical.com](https://www.intersurgical.com)

Intersurgical's easy-to-use, disposable absorber. Compatible with GE® Carestation® 600 series and 750™ anesthetic machines. Containing Spherasorb unique medical-grade CO<sub>2</sub> absorbent combining resistance to drying, safety with volatile anesthetics, low dust, excellent CO<sub>2</sub> capacity and less waste. Also available with LoFloSorb alkali hydroxide-free absorbent.





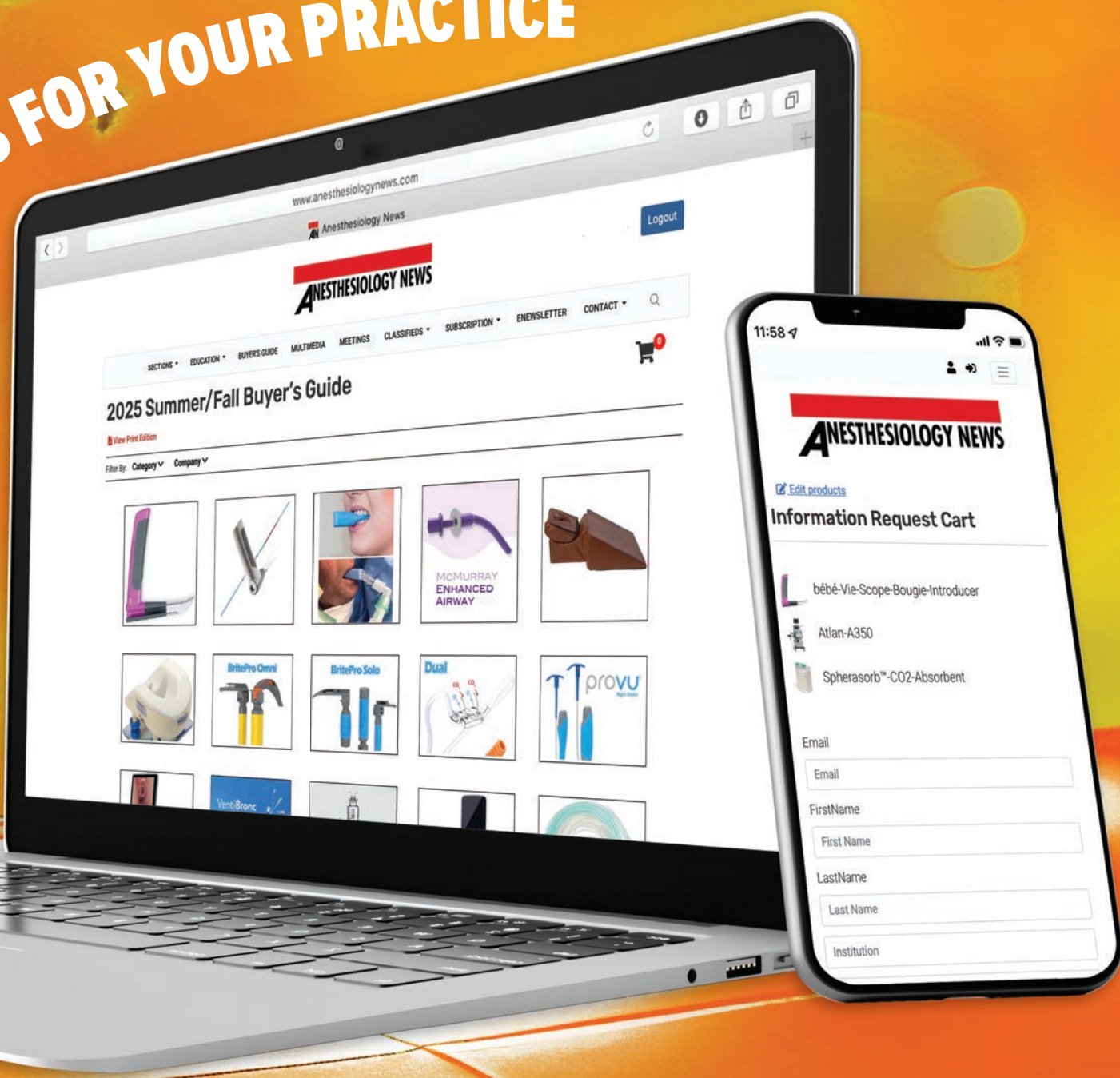
**Summer/Fall 2025**

# BUYER'S GUIDE

**NEW PRODUCTS FOR YOUR PRACTICE**



Always Available at  
**AnesthesiologyNews.com/BuyersGuide**





**ANESTHESIA MACHINES**

33

**INTERSURGICAL INC.**

**THE DRUM™ CO<sub>2</sub> ABSORBENT**



2055 Executive Drive, Indianapolis, IN 46241  
800-828-9633  
support@intersurgicalinc.com  
intersurgical.com

Intersurgical's easy-to-use, prefilled 1 kg absorbent. Compatible with refillable absorbers of numerous anesthetic machine models. Containing Spherasorb unique medical-grade CO<sub>2</sub> absorbent combining resistance to drying, safety with volatile anesthetics, low dust, excellent CO<sub>2</sub> capacity and less waste. Also available with LoFloSorb alkali hydroxide-free absorbent.



**ANESTHESIA MACHINES**

37

**MINDRAY**

**A8/A9 ANESTHESIA WORKSTATIONS**



800 MacArthur Boulevard, Mahwah, NJ 07430  
800-288-2121  
customerservice@mindray.com  
mindraynorthamerica.com

Mindray's newest A8 and A9 anesthesia platforms retain traditional features while introducing disruptive technology to maximize patient safety, help improve patient outcomes, complement the way clinicians work best and increase efficiency in the perioperative environment. The integrated high-flow nasal cannula helps clinicians intubate more easily, and the innovative breathing system delivers extremely precise and reliable ventilation.



**ANESTHESIA MACHINES**

34

**INTERSURGICAL INC.**

**THE PYRAMID™ CO<sub>2</sub> ABSORBENT**



2055 Executive Drive, Indianapolis, IN 46241  
800-828-9633  
support@intersurgicalinc.com  
intersurgical.com

Intersurgical's easy-to-use, disposable absorber. Compatible with Draeger® anesthetic machines using the Draeger CLIC™ adapter. Containing Spherasorb unique medical-grade CO<sub>2</sub> absorbent combining resistance to drying, safety with volatile anesthetics, low dust, excellent CO<sub>2</sub> capacity and less waste. Also available with LoFloSorb alkali hydroxide-free absorbent.



**ANESTHESIA MACHINES**

38

**MINDRAY**

**ANESTHETIC VAPORIZERS**



800 MacArthur Boulevard, Mahwah, NJ 07430  
800-288-2121  
customerservice@mindray.com  
mindraynorthamerica.com

Mindray offers a full range of electronic and mechanical anesthetic vaporizers for use with the A-Series anesthesia machines. Traditional V60 and Vapor 2000 ensure a constant output and accurate concentration of anesthetic agents with their Automatic Flow/Temperature/Pressure Compensation, and V90 electronic vaporizers provide precise agent delivery in a familiar position and notify the user when agent gets low (A9 only).



**ANESTHESIA MACHINES**

35

**MINDRAY**

**A4 ADVANTAGE ANESTHESIA SYSTEM**



800 MacArthur Boulevard, Mahwah, NJ 07430  
800-288-2121  
customerservice@mindray.com  
mindraynorthamerica.com

Flexibility when and where you need it: The A4 Advantage Anesthesia System offers a versatile solution for optimal patient care. Flexible design allows customization of ventilation capabilities with optional integrated gas analysis, and low-flow decision support is available with the Optimizer™. Industry-standard HL7 data output provides facilities with a cost-effective anesthesia system.



**BLOOD MANAGEMENT**

39

**HAEMONETICS CORPORATION**

**TEG® 6s HEMOSTASIS ANALYZER SYSTEM**



125 Summer Street, Suite 1800, Boston, MA 02110  
800-537-2802  
customerservicenah@haemonetics.com  
hospital.haemonetics.com/hemostasis-management

The TEG® 6s hemostasis analyzer system delivers fast, accurate information where and when you need it, so you can respond with confidence and optimize patient care. Powered by an easy-to-use, cartridge-based system with software that allows secure results viewing from anywhere within the hospital network, TEG 6s takes you beyond routine coagulation tests in support of better patient blood management.



**ANESTHESIA MACHINES**

36

**MINDRAY**

**A5/A7 ADVANTAGE ANESTHESIA SYSTEMS**



800 MacArthur Boulevard, Mahwah, NJ 07430  
800-288-2121  
customerservice@mindray.com  
mindraynorthamerica.com

Scalable functionality and support: The A5 and A7 Advantage Anesthesia Systems offer modular scalability with advanced functionality. Optional features include integrated gas analysis, airway pressure release ventilation, spirometry, lung recruitment and low-flow decision support tools with the Optimizer™. The A-Series Advantage platform enhances clinical care and improves user satisfaction with more choices in ventilation modes and support.



**BLOOD MANAGEMENT**

40

**HEMOSONICS**

**QUANTRA® HEMOSTASIS SYSTEM**



4020 Stirrup Creek Drive, Suite 105, Durham, NC 27703  
800-280-5589  
contact@hemosonics.com  
hemosonics.com

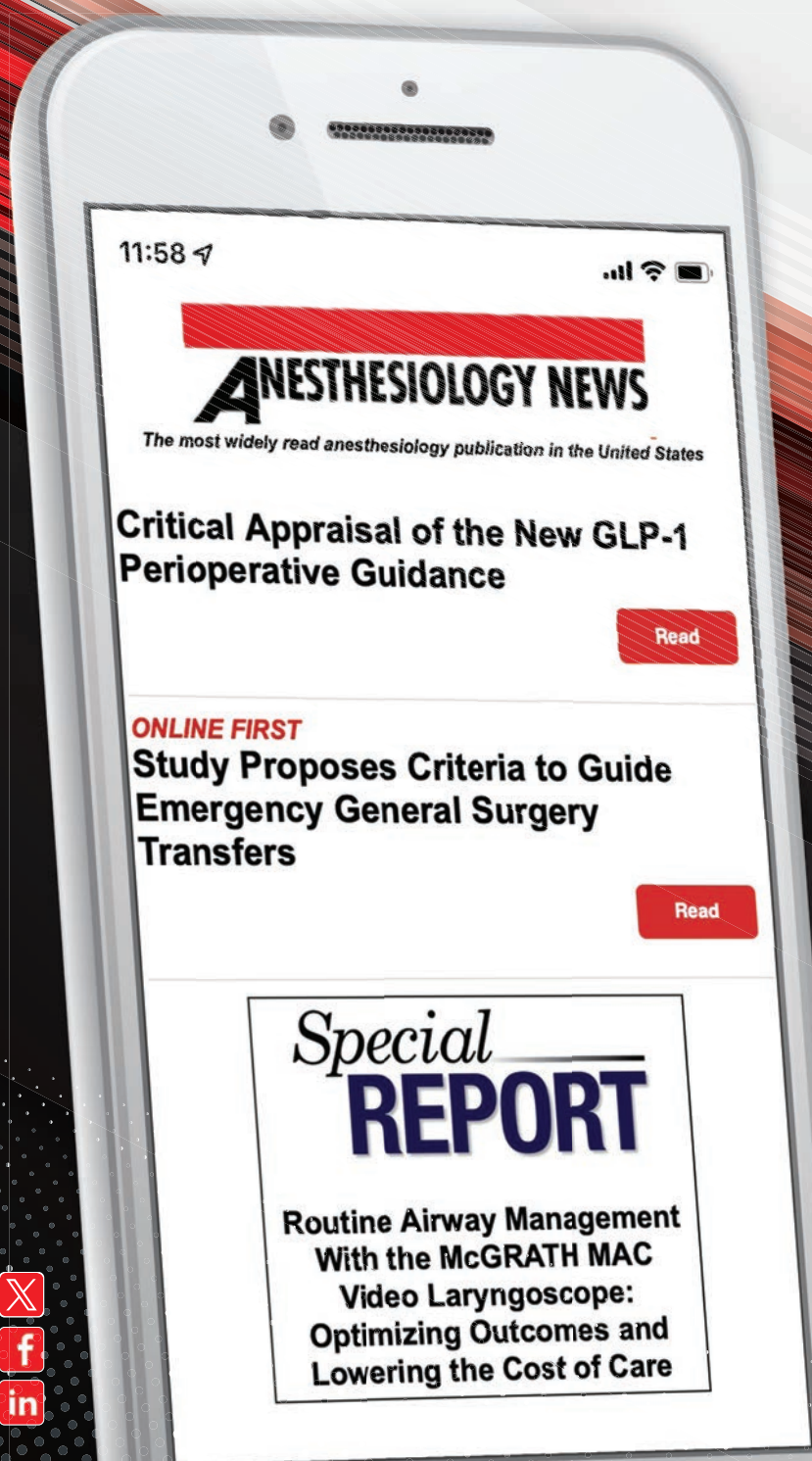
The Quantra® Hemostasis System delivers rapid, precise coagulation results at the point of care across cardiovascular, trauma, liver transplant and major orthopedic surgery; the broadest range of clinical indications of any cartridge-based system in the U.S. Other benefits include remote result viewing, intuitive interpretation and expert support for implementation, adoption and scalability.



GET THE LATEST HEADLINES,  
ONLINE-FIRST CONTENT, PODCASTS,  
MULTIMEDIA & MORE DELIVERED  
**DIRECTLY TO YOUR INBOX!**



AnesthesiologyNews.com/eNews



**BREATHING CIRCUITS & MASKS**

41

**DRÄGER**

**ANESTHESIA CIRCUIT KITS**

See ad on p. 16



3135 Quarry Road, Telford, PA 18969  
800-437-2437  
info.usa@draeger.com  
draeger.com

Dräger's Anesthesia Circuit Kits offer exceptional value by combining our high-quality anesthesia consumables into one complete solution. Preconfigured kit with key components and preassembled makes them out-of-bag ready for your anesthesia device. A clutter-free workspace helps you focus on your patient and prepare for the next case with less effort.

**Dräger**

**BREATHING CIRCUITS & MASKS**

42

**INTERSURGICAL INC.**

**ANESTHESIA BREATHING CIRCUITS**



2055 Executive Drive, Indianapolis, IN 46241  
800-828-9633  
support@intersurgicalinc.com  
intersurgical.com

Intersurgical's new customizable anesthesia breathing circuits allow you to select components to build a configuration to best suit your clinical requirements. Choose the type of circuit and length required, gas monitoring option, reservoir bag size, connectors, filtration efficiency and patient interface.

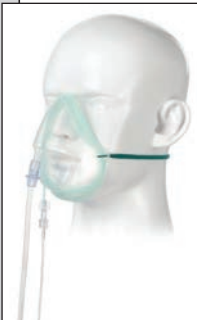
**INTERSURGICAL**  
COMPLETE RESPIRATORY SYSTEMS

**BREATHING CIRCUITS & MASKS**

43

**INTERSURGICAL INC.**

**SENTRI™ END-TIDAL CO<sub>2</sub> MASK**



2055 Executive Drive, Indianapolis, IN 46241  
800-828-9633  
support@intersurgicalinc.com  
intersurgical.com

Intersurgical's Senti mask permits the sampling of exhaled carbon dioxide in non-intubated patients during the administration of supplementary oxygen. As part of the EcoLite range, the mask is part of Intersurgical's ongoing focus on sustainable development while providing improved patient comfort.

**INTERSURGICAL**  
COMPLETE RESPIRATORY SYSTEMS

**BREATHING CIRCUITS & MASKS**

44

**MEDIPLUS LTD.**

**CAPNOMASK™**



The Gateway Centre, Coronation Road,  
High Wycombe, Buckinghamshire, England HP12 3SU  
+44-0-1494-551200  
marketing@mediplusuk.com  
mediplusuk.com

A dedicated, medium-concentration mask for accurate detection of end-tidal carbon dioxide. Fully integrated, 10-foot oxygen and CO<sub>2</sub> lines. Ergonomically molded in soft, high-quality polyvinyl chloride for patient comfort. Impregnated with a subtle vanilla scent to help with anxiety and postoperative nausea. Available in adult,

pediatric and ophthalmic patients with standard and Microstream™. Innovation for patient care.

**m mediplus**

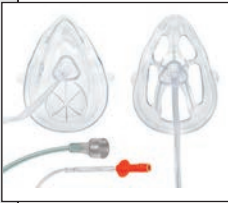


BREATHING CIRCUITS & MASKS

45

MEDTRONIC

OXY<sub>2</sub>PRO™ AND OXY<sub>2</sub>MASK™ ETCO<sub>2</sub> WITH MICROSTREAM™ CONNECTOR



6135 Gunbarrel Avenue, Boulder, CO 80301  
800-635-5267  
medtronic.com/oxy2pro

The Oxy<sub>2</sub>Pro™ and Oxy<sub>2</sub>Mask™ etCO<sub>2</sub> with Microstream™ connector help you better measure your patient's airflow and manage your team's workflow. The masks are preassembled to get your patient set up quickly and provides FiO<sub>2</sub> delivery up to 95% with O<sub>2</sub> titration up to 15+ LPM. Available in adult, adult plus and pediatric (Oxy<sub>2</sub>Mask\* only) sizes, these are the only masks endorsed for use with Microstream technology.

\* Oxy<sub>2</sub>Pro™ and Oxy<sub>2</sub>Mask™ are manufactured by SouthMed Inc., and distributed by Medtronic™. Third-party brands are trademarks of their respective owners. All other brands are trademarks of a Medtronic company.

Medtronic

INFORMATION MANAGEMENT SYSTEMS

49

DRÄGER

DATA ANALYTICS



3135 Quarry Road, Telford, PA 18969  
800-437-2437  
info.usa@draeger.com  
draeger.com

Dräger Connect, our cloud-based platform, securely transfers data to a simplified dashboard that enables your clinical and support teams to collect important information and gain more transparency. It is designed to help clinical staff improve clinical practices, drive operational efficiency for administration and simplify support processes for healthcare technology management.

Dräger

See ad on p. 16

CARTS

46

ARMSTRONG MEDICAL INDUSTRIES, INC.

ALUMINUM WIRELESS AUTO-LOCKING CART



575 Knightsbridge Parkway, Lincolnshire, IL 60069  
800-323-4220  
csr@armstrongmedical.com  
armstrongmedical.com

The Aluminum Wireless Auto-Locking Cart features keyless entry, an LCD display (shows date, time of day, current battery life and programmable menu-driven display system that prompts you to each additional command), integrated 802.11g/802.11n wireless capabilities with a wireless antenna, up to 5,000 user codes, a supervisor code for programming, and manual or automatic locking. Optional card readers and software are available.

Armstrong Medical  
INDUSTRIES INC.

MONITORING SYSTEMS & DEVICES

50

BD

ACUMEN HYPOTENSION PREDICTION INDEX™



17200 Laguna Canyon Road, Irvine, CA 92618  
edwards.com/hpi

Acumen HPI™ Software predicts and helps you treat hypotension, with insights to drill down to the root cause of hemodynamic instability. Use of Acumen HPI™ Software has shown a low incidence, duration and severity of hypotension.<sup>1</sup>

1. Kouz K, et al. *BJA Open*. 2023;6:100140.

CAUTION: Rx only. See IFU.

© 2025 BD. All Rights Reserved.

BD

CARTS

47

HEALTH CARE LOGISTICS®

AVALO® COMPLETE ANESTHESIA CART



P.O. Box 25, Circleville, OH 43113  
800-848-1633  
hcl@gohcl.com  
gohcl.com

Improve workflow with this generously equipped cart that combines organization and function for reliable performance. The built-in keypad accepts up to 5 four-digit access codes to keep contents secure. Drawers with dividers provide space to organize supplies. And the included storage tower offers a place to hang bins (sold separately) for fast access to loose items. The unit sits on four swivel casters with one locking wheel that keeps it in place when needed.

Your small friend, indeed®  
Health Care Logistics  
INC.

See ad on p. 6

MONITORING SYSTEMS & DEVICES

51

BD

ACUMEN IQ™ CUFF



17200 Laguna Canyon Road, Irvine, CA 92618  
edwards.com/acumeniqcuff

Acumen IQ™ Cuff unlocks Acumen Hypotension Prediction Index (HPI™) Software while delivering continuous blood pressure monitoring and advanced hemodynamic parameters noninvasively.

CAUTION: Rx only. See IFU.

© 2025 BD. All Rights Reserved.

BD

INFECTION PREVENTION

48

MARKETLAB

EYEGARD® EYE COVERS



6850 Southbelt Drive, Caledonia, MI 49316  
800-237-3604  
service@marketlab.com  
sharn.com/eyeguard

Switch from surgical tape to EyeGuard® for a safer, cleaner eye closure solution. With its hypoallergenic, perfectly oval design, it minimizes cross-contamination risks and simplifies application with gloves. Economical and designed for optimal safety, EyeGuard is the definitive choice for eye care. Contact us for free samples.

SHARN

MONITORING SYSTEMS & DEVICES

52

BD

FORESIGHT™ TISSUE OXIMETRY SENSOR



17200 Laguna Canyon Road, Irvine, CA 92618  
edwards.com/foresight

Foresight™ Sensor is designed to accommodate your patients' unique differences, including skin tone, size, skin-to-cortex distance and acuity, providing the reliable tissue oximetry insights you need to intervene when it matters most.

CAUTION: Rx only. See IFU.

© 2025 BD. All Rights Reserved.

BD

MONITORING SYSTEMS & DEVICES

53

BD

HEMOSPHERE ALTA™ MONITORING PLATFORM



17200 Laguna Canyon Road, Irvine, CA 92618  
bd.com/hemospherealta

Manage patients with the visibility and confidence of customizable multi-sensor monitoring that gives you a comprehensive view of pressure, flow and tissue oxygenation. Monitor on an intuitive 15-inch screen display with streamlined controls and voice and gesture commands that make your go-to functions easily accessible.

CAUTION: Rx only. See IFU.

© 2025 BD. All Rights Reserved.

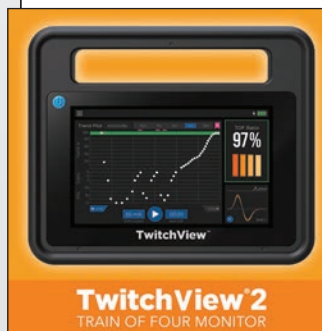


MONITORING SYSTEMS & DEVICES

56

BLINK DEVICE COMPANY

TWITCHVIEW2



1530 Westlake Avenue N #600, Seattle, WA 98109  
206-708-6043  
contact@blinkdc.com  
blinkdc.com

TwitchView2 is a next-generation quantitative neuromuscular monitor. Based on clinically validated technology, our monitor optimizes neuromuscular blockade management, eliminates residual paralysis, can withstand OR abuse and perform reliably in the most difficult-to-monitor patients. We provide easy-to-place infant-, pediatric- and adult-sized electrodes and a one-button startup to minimize workflow disruptions.



MONITORING SYSTEMS & DEVICES

54

BD

HEMOSPHERE VITA™ MONITORING PLATFORM



17200 Laguna Canyon Road, Irvine, CA 92618  
edwards.com/hemospherevita

HemoSphere Vita™ Monitoring Platform uses noninvasive technology for continuous blood pressure and tissue oxygenation insights designed to support informed decisions and proactive interventions.

CAUTION: Rx only. See IFU.

© 2025 BD. All Rights Reserved.



MONITORING SYSTEMS & DEVICES

57

DRÄGER

INFINITY® ACUTE CARE SYSTEM

See ad on p. 16



3135 Quarry Road, Telford, PA 18969  
800-437-2437  
info.usa@draeger.com  
draeger.com

Our Infinity® Acute Care System combines mobility, comprehensive patient monitoring and clinical IT into one complete solution. The Infinity M540 allows for a single monitor and cables to move with the patient throughout the perioperative care process and beyond to reduce risk for infection and support uninterrupted, focused care.



MONITORING SYSTEMS & DEVICES

55

BELL MEDICAL

STIMPOD 450X+ QUANTITATIVE TRAIN-OF-FOUR MONITOR



1728 Macklind Avenue, St. Louis, MO 63110  
314-772-5600  
customerservice@bellmedical.com  
bellmedical.com

New Stimpod 450X+ quantitative train-of-four (QTOF) monitor with color touch screen display has both acceleromyography (AMG) and electromyography capabilities in the same device. No calibration is needed for either mode. AMG monitoring is cost free! Stimpod 450X+ offers connectivity to EMR. Use QTOF monitoring and save up to 42% in drug savings.



MONITORING SYSTEMS & DEVICES

58

MINDRAY

BENEVISION N1



800 MacArthur Boulevard, Mahwah, NJ 07430  
800-288-2121  
customerservice@mindray.com  
mindraynorthamerica.com

The BeneVision N1 is a multiparameter module for N-Series monitors, transport and bedside monitor—all in one. N1's feature set includes three-/five-/12-lead ECG with ST segment and arrhythmia analysis, noninvasive blood pressure, dual invasive blood pressure, oxygen saturation, respiration, temperature, and optional end-tidal CO<sub>2</sub>. N1 is lightweight (2.0 pounds), versatile and maintains continuity of patient information, speeding workflow from bedside to transport and beyond.



Clinical  
REVIEW

FROM THE  
bench  
TO THE bedside

Special  
REPORT

Monographs  
& Whitepapers





**MONITORING SYSTEMS & DEVICES**

59

**MINDRAY**

**BENEVISION N12/N15/N17 PATIENT MONITORS**



800 MacArthur Boulevard, Mahwah, NJ 07430  
800-288-2121  
customerservice@mindray.com  
mindraynorthamerica.com

The N-Series is a monitoring platform targeted to mid-to-high-acuity clinical environments. Choose from a 12-, 15- or 17-inch multi-gesture touch-screen display, optional multi-gas module with minimal alveolar concentration measurements, neuromuscular transmission, and brain regional oxygen saturation. The N-Series is optimal in an OR setting. Use the N1 as both the multiparameter module and the transport monitor, providing a smooth, seamless transport with no interruption in patient monitoring.

**mindray**

**MONITORING SYSTEMS & DEVICES**

60

**MINDRAY**

**BENEVISION N19/N22 PATIENT MONITORS**



800 MacArthur Boulevard, Mahwah, NJ 07430  
800-288-2121  
customerservice@mindray.com  
mindraynorthamerica.com

The N19 and N22 monitors are designed with an unprecedented level of customization and advanced capabilities, perfectly suited for use across the entire perioperative space. Options such as cardiopulmonary bypass mode, neuromuscular transmission, regional oxygen saturation and OR-specific user configurations make these monitors a preferred solution for both anesthesiologist and surgical staff.

**mindray**

**MONITORING SYSTEMS & DEVICES**

61

**MINDRAY**

**EPM 10M/12M/15M**



800 MacArthur Boulevard, Mahwah, NJ 07430  
800-288-2121  
customerservice@mindray.com  
mindraynorthamerica.com

The ePM Series 12M or 15M, paired with the ePM multi-gas module, automatically identify and measure the inspired and expired values of O<sub>2</sub>, CO<sub>2</sub>, N<sub>2</sub>O and five anesthetic agents providing a powerful OR monitoring solution. Integrated in the ePM 10M,

12M and 15M monitors: 3- and 5-lead ECG, SpO<sub>2</sub>, NIBP, respiration and temperature, offering a robust parameter platform for the ambulatory surgical care environment.

**mindray**

**MONITORING SYSTEMS & DEVICES**

62

**MINDRAY**

**N-SERIES PATIENT MONITORS**



800 MacArthur Boulevard, Mahwah, NJ 07430  
800-288-2121  
customerservice@mindray.com  
mindraynorthamerica.com

Mindray and BD have collaborated to offer an advanced monitoring solution providing greater insights into hemodynamic instability by integrating the FloTrac™ Sensor technology into the BeneVision N-Series Patient Monitors. Proactive decision support at point-of-care, helping evaluate hemodynamic instability and guide appropriate treatment for your moderate- to high-risk surgical patients.

**mindray**

**MONITORING SYSTEMS & DEVICES**

63

**SENZIME**

**NEXT-GENERATION TETRAGRAPH®**



748 Hanley Industrial Court, St. Louis, MO 63144  
314.334.8222  
info@senzime.com  
senzime.com

Residual neuromuscular block (NMB) affects 1 in 3 patients—even with the use of reversal agents. Next-generation TetraGraph® with Adaptive Intelligence™ delivers clinically validated, EMG-based real-time train-of-four data and features the proprietary Level-of-Block Gauge™ to guide safe, precise NMB dosing and reversal. Its sensor portfolio supports patients from 28 days old to adults—advancing accuracy, safety and confidence.

**SENZIME**

**MONITORING SYSTEMS & DEVICES**

64

**WERFEN**

**ROTEM SIGMA**



180 Hartwell Road, Bedford, MA 01730  
800-955-9525  
customerservice.na@werfen.com  
werfen.com/na/en

ROTEM sigma is an easy-to-use, cartridge-based thromboelastometry (TEM) system that delivers rapid results at the point of care, providing guidance in bleeding management. Used to assess clinically significant bleeding situations in cardiac surgery and liver transplantation, ROTEM TEMograms provide clear, real-time information.

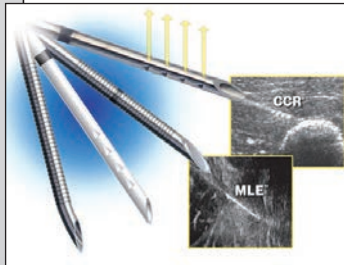
**werfen**

**PAIN MANAGEMENT**

65

**HAVEL'S, INC.**

**ULTRASOUND NEEDLES FOR NERVE BLOCKS & PAIN INJECTIONS**



3726 Lonsdale Street, Cincinnati, OH 45227  
800-638-4770  
jbarrett@havel's.com  
havel's.com

See the needle, see the target and improve your success rate. Our focus on the tip reduces manufacturing costs and allows you to see the exact location of the needle's tip. No other needle is as accurate and affordable.

**havel's™**

See ad on p. 15

**MONITORING SYSTEMS & DEVICES**

66

**BELL MEDICAL**

**BELL MEDICAL**

**EYEPRO AND NOPRESS EYE PROTECTION**



1728 Macklind Avenue, St. Louis, MO 63110  
314-772-5600  
customerservice@bellmedical.com  
bellmedical.com

Stop costly eye injuries. Save your patients' eyelashes. EyePro and NoPress are designed to reduce costly eye injuries and improve patient satisfaction scores. EyePro is a sterile dressing that uses dual-zone adhesive to seal the eye area but not harm the eyelids and eyelashes upon removal. NoPress shields the eyes from external forces that might harm the eyes. Call for free samples of both the EyePro and NoPress eye shields.

**Bell Medical**

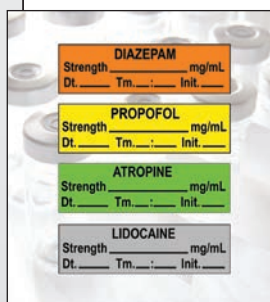
**PATIENT SAFETY**

67

**HEALTH CARE LOGISTICS®**

**LABELING TAPES**

See ad on p. 6



P.O. Box 25, Circleville, OH 43113  
800-848-1633  
hcl@gohcl.com  
gohcl.com

Labeling Tapes provide a perforated, tangle-free alternative to permanent labels that won't leave behind residue upon removal. Use these preprinted tapes on drug containers, IV lines and equipment to avoid dosing errors and improve patient safety. Or add warnings to high-alert items and raise awareness for critical contents. Write details directly on the tape to further reduce confusion. Custom-printed tapes are available to communicate site-specific messages. All tapes arrive in clear clamshell packages for convenient dispensing.

Your small friend, indeed®  
**Health Care Logistics**  
INC.

**SURGICAL BOOMS & LIGHTS**

71

**DRÄGER**

**POLARIS® 600**

See ad on p. 16



3135 Quarry Road, Telford, PA 18969  
800-437-2437  
info.usa@draeger.com  
draeger.com

The Polaris® 600 surgical light combines advanced technologies to support precision and efficiency. Intuitive controls adapt the light to each procedure and individual surgeon's need, so you can focus on what matters most—your patient.

**Dräger**

**REGIONAL ANESTHESIA**

68

**BELL MEDICAL**

**TEREBOOT NERVE BLOCK SUPPORT**



1728 Macklind Avenue, St. Louis, MO 63110  
314-772-5600  
customerservice@bellmedical.com  
bellmedical.com

Nerve blocks made easier. The Tereboot is a portable and adjustable lower extremity positioning device that you place directly onto your patient's bed for supine-positioned, ultrasound-guided popliteal fossa blocks, iPACK, adductor canal, saphenous and ankle blocks. Nerve blocks will be easier, safer and faster, with no pillows or blankets needed. All metal with a five-year full warranty.



**ULTRASOUND**

72

**BUTTERFLY NETWORK, INC.**

**BUTTERFLY IQ3™**



1600 District Avenue, Burlington, MA 01803  
support@butterflynetwork.com  
butterflynetwork.com

Butterfly IQ3™ delivers crystal-clear ultrasound imaging, rapid processing, and advanced tools like the new Needle: Out-of-Plane™ preset and Biplane Imaging™ for precise needle guidance. Perfect for anesthesiologists, its ergonomic build and long battery life ensure seamless use. Elevate your practice with superior visualization and efficiency in a compact, reliable probe.

**Butterfly™**

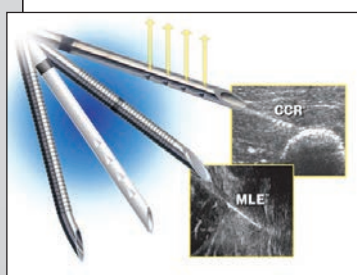
**REGIONAL ANESTHESIA**

69

**HAVEL'S, INC.**

**ULTRASOUND NEEDLES FOR NERVE BLOCKS & PAIN INJECTIONS**

See ad on p. 15



3726 Lonsdale Street, Cincinnati, OH 45227  
800-638-4770  
jbarrett@havels.com  
havels.com

See the needle, see the target and improve your success rate. Our focus on the tip reduces manufacturing costs and allows you to see the exact location of the needle's tip. No other needle is as accurate and affordable.

**havel's™**

**ULTRASOUND**

73

**MINDRAY**

**TE7 MAX**



800 MacArthur Boulevard, Mahwah, NJ 07430  
800-288-2121  
customerservice@mindray.com  
mindraynorthamerica.com

The TE7 Max Ultrasound System is designed to maximize your capabilities in demanding point-of-care environments. With its thoughtful industrial design and best-in-class image quality, the TE7 Max provides a superior user experience during rapid clinical assessments and procedures taking place at the patient's bedside or on the go.

**mindray**

**SURGICAL BOOMS & LIGHTS**

70

**DRÄGER**

**AMBIA®**

See ad on p. 16



3135 Quarry Road, Telford, PA 18969  
800-437-2437  
info.usa@draeger.com  
draeger.com

Adapt acute care workstations ideally to your specific needs with our Ambia® ceiling-mounted supply unit. With its numerous accessories and wide range of variation options, the Ambia ensures you maximum flexibility at the workplace. This not only helps to improve hospital workflows but also increases the well-being of staff and patients alike.

**Dräger**

**ULTRASOUND**

74

**MINDRAY**

**TE X ULTRASOUND SYSTEM**



800 MacArthur Boulevard, Mahwah, NJ 07430  
800-288-2121  
customerservice@mindray.com  
mindraynorthamerica.com

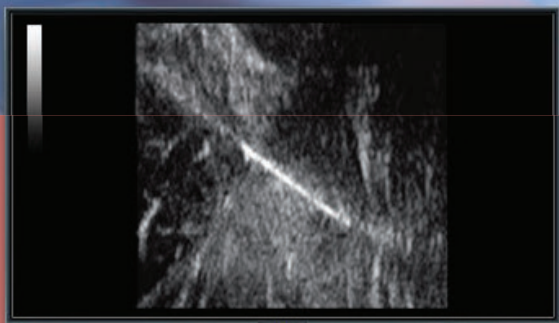
The revolutionary Mindray TE X Flex Procedural Edition provides a robust suite of intelligent tools that enhances procedural accuracy for nerve blocks and real-time vascular access guidance, aids in perioperative assessment, supports clinical decision-making, and empowers anesthesiologists with real-time insights for safer, more efficient care.

**mindray**





# Havel's ultrasound needles for nerve blocks and pain injections.



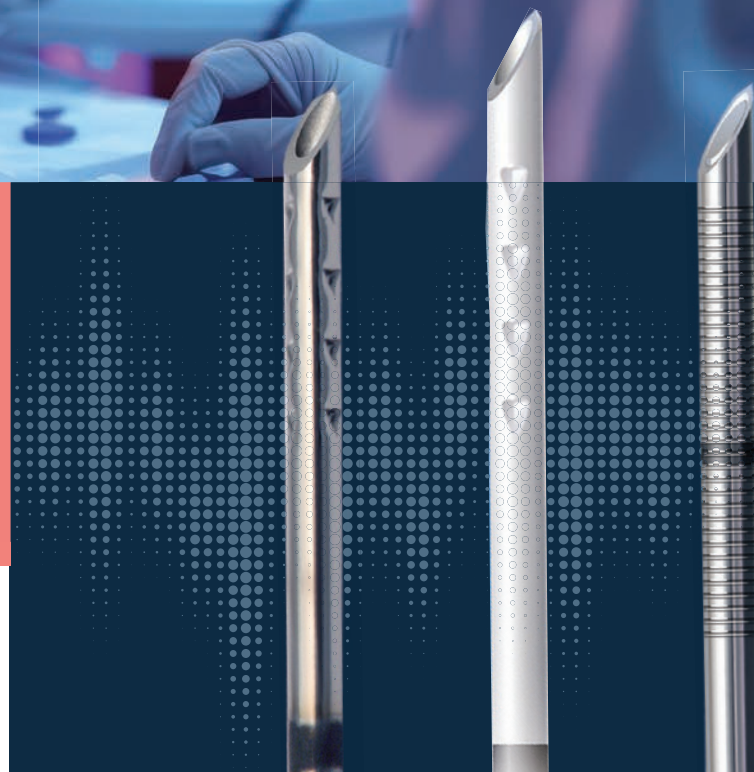
See the needle, see the target  
and improve your success rate.

Available in two unique styles.

**CCR™ Corner Cube Reflectors**  
(Extension Tubing Included)

**MLE™ Micro Laser Etching**

Both illuminate needles under ultrasound  
and are available in 18° and 30° bevels.



**Get a Free Sample**

**John Barrett**

1-800-638-4770, ext. 13

[jbarrett@havels.com](mailto:jbarrett@havels.com)

or scan the QR code:



# Simply ingenious starts here



The new Atlan® family  
[draeger.com/atlan](http://draeger.com/atlan)

**Dräger**

Technology for Life